

**A joint collaboration between Stark County Public Health Agencies:**

Alliance City Health Department

Canton City Public Health

Massillon City Health Department

Stark County Health Department

Stark County, Ohio

June 24, 2021 Epi Report

**COVID-19 Snapshot  
Stark County, Ohio  
as of 12:00pm  
June 24, 2021**

**June 10, 2021-June 23, 2021  
Number of Confirmed & Probable Cases  
in Stark County**

**83**

**Rate per 100,000 in Stark County Population**

**22.4**

**Confirmed  
Cases**

Total:  
28,176

Active/Open Cases:  
9,010

Closed:  
(includes Deaths)  
19,166

Closed due to Death:  
844

**Probable  
Cases**

Total:  
5,224

Active/Open Cases:  
1,921

Closed:  
(includes Deaths)  
3,303

Closed due to Death:  
141

**Hospitalized  
Confirmed &  
Probable Cases**

Yes:  
(includes ICU)  
2,045

Yes, ICU:  
159

Discharged:  
1,055

**Age  
Range**

Confirmed  
Cases:  
<1-108

Hospitalized in  
Confirmed  
Cases:  
<1-105

Deaths in  
Confirmed  
Cases:  
21-108

All data contained is preliminary and is subject to change as more information is reported to Ohio Department of Health (ODH). Data presented in this document is based on data as of 06.24.2021 12:00 pm (for Stark County data) and/or 2:00pm (for Ohio data). Cases from previous days are likely to change as more information is entered. Caution should be exercised as data is subject to change. Numbers may differ from ODH depending on time data was accessed.

For questions regarding this report, please contact:

Amanda Archer, MPH [aarcher@cantonhealth.org](mailto:aarcher@cantonhealth.org)

Jessica Boley, RD, LD [jboley@cantonhealth.org](mailto:jboley@cantonhealth.org)

Chelsea Sadinski, MPH [SadinskiC@starkhealth.org](mailto:SadinskiC@starkhealth.org)



**Stark County Epi Situational Report - COVID-19**

**Table 1 as of: 06/24/2021 12:30PM**

Next report scheduled: 07/01/2021

| Cases Reported to Stark LHDs |        |       |
|------------------------------|--------|-------|
| Data as of 06.24.2021 12:30  |        |       |
| Positive/Confirmed           | 28,176 |       |
| Hospitalized                 | 1,989  | 7.06% |
| ICU Admissions               | 154    | 0.55% |
| Deaths in Confirmed Cases    | 844    | 3.00% |
| Probable Cases               | 5,224  |       |
| Deaths in Probable Cases     | 141    |       |

| Cases Reported to ODH                             |         |       |
|---|---------|-------|
| Data as of 06.24.2021 14:00                       |         |       |
| Positive/Confirmed                                | 927,933 |       |
| Hospitalized*                                     | 60,405  | 6.51% |
| ICU Admissions*                                   | 8,293   | 0.89% |
| Probable Cases                                    | 182,067 |       |
| COVID related deaths of Ohio Residents            |         |       |
| 20,213  |         |       |
| *Hospitalized & ICU includes confirmed & probable |         |       |

**Descriptive Statistics for Stark County Confirmed Cases**

| Gender  |                 |       |        |
|---------|-----------------|-------|--------|
|         | Confirmed Cases |       | Deaths |
| Male    | 12,404          | 44.0% | 444    |
| Female  | 15,458          | 54.9% | 400    |
| Unknown | 314             | 1.1%  | 0      |
| Total   | 28,176          |       | 844    |

| Ethnicity |          |          |          |
|-----------|----------|----------|----------|
|           | Hispanic | Non-Hisp | Unknown* |
| Count     | 381      | 15,339   | 12,456   |
| %         | 1.4%     | 54.4%    | 44.2%    |

| Race   |        |       |                        |                                |       |          |
|--|--------|-------|------------------------|--------------------------------|-------|----------|
|  | White  | Black | Asian/Pacific Islander | American Indian/Alaskan Native | Other | Unknown* |
| Count  | 15,969 | 1,975 | 123                    | 50                             | 941   | 9,118    |
| %  | 56.7%  | 7.0%  | 0.4%                   | 0.2%                           | 3.3%  | 32.4%    |
| *Unknown counts includes refused to answer responses |        |       |                        |                                |       |          |

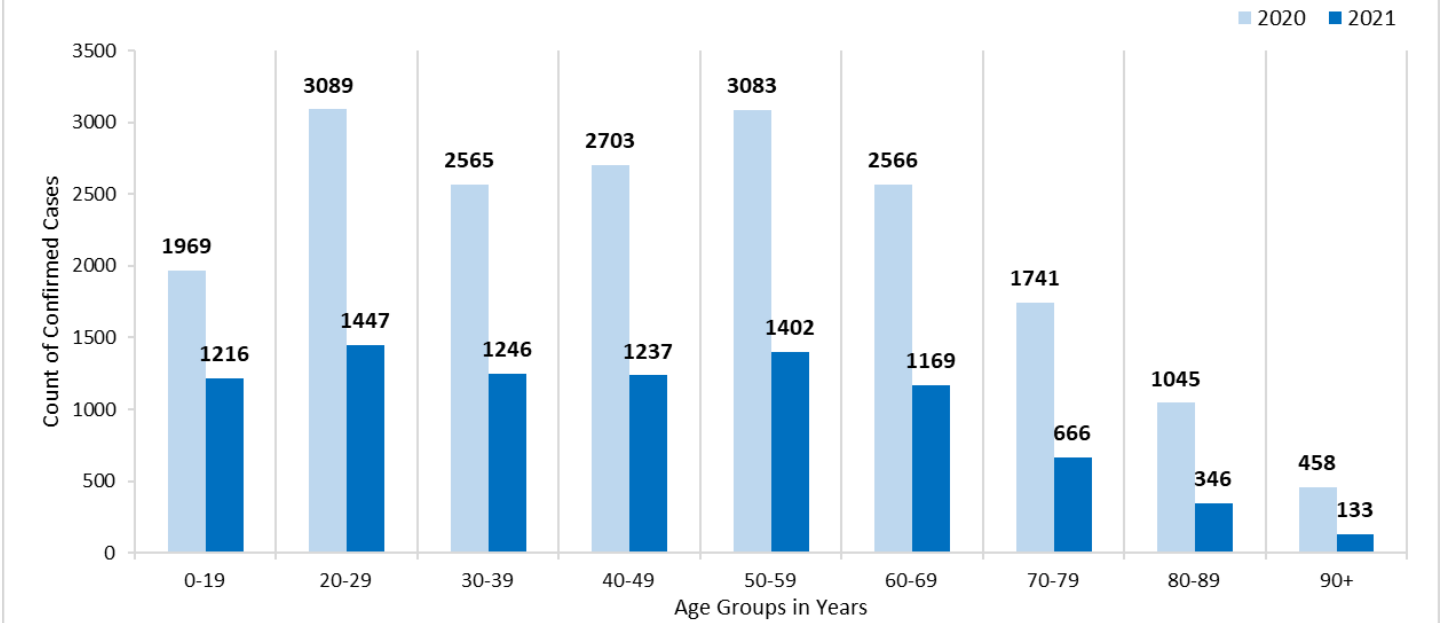
**Hospitalization Information for Stark County Confirmed Cases-Cumulative Counts**

| Hospitalized |        |       | If hospitalized, in ICU? |       |     | Discharged from Hospital |     |  |
|--------------|--------|-------|--------------------------|-------|-----|--------------------------|-----|--|
| Yes          | 1,989  | 7.1%  | Yes                      | 154   | 8%  | ICU                      | 116 |  |
| No           | 25,328 | 89.9% | No                       | 1,835 | 92% | Other                    | 909 |  |
| Unknown      | 859    | 3.0%  |                          |       |     |                          |     | Some cases may be discharged due to death. |

**Stark County Vaccination Update as of 6/24/2021**

| Current Vaccination Groups Eligible       | Vaccine Started      | Vaccine Completed    |
|---|----------------------|----------------------|
| Phases 1A, 1B, 1C, 1D, 1E, 2A, 2B, 2C, 2D | Count: 163,929       | Count: 150,167       |
|   | 44.23% of population | 40.52% of population |

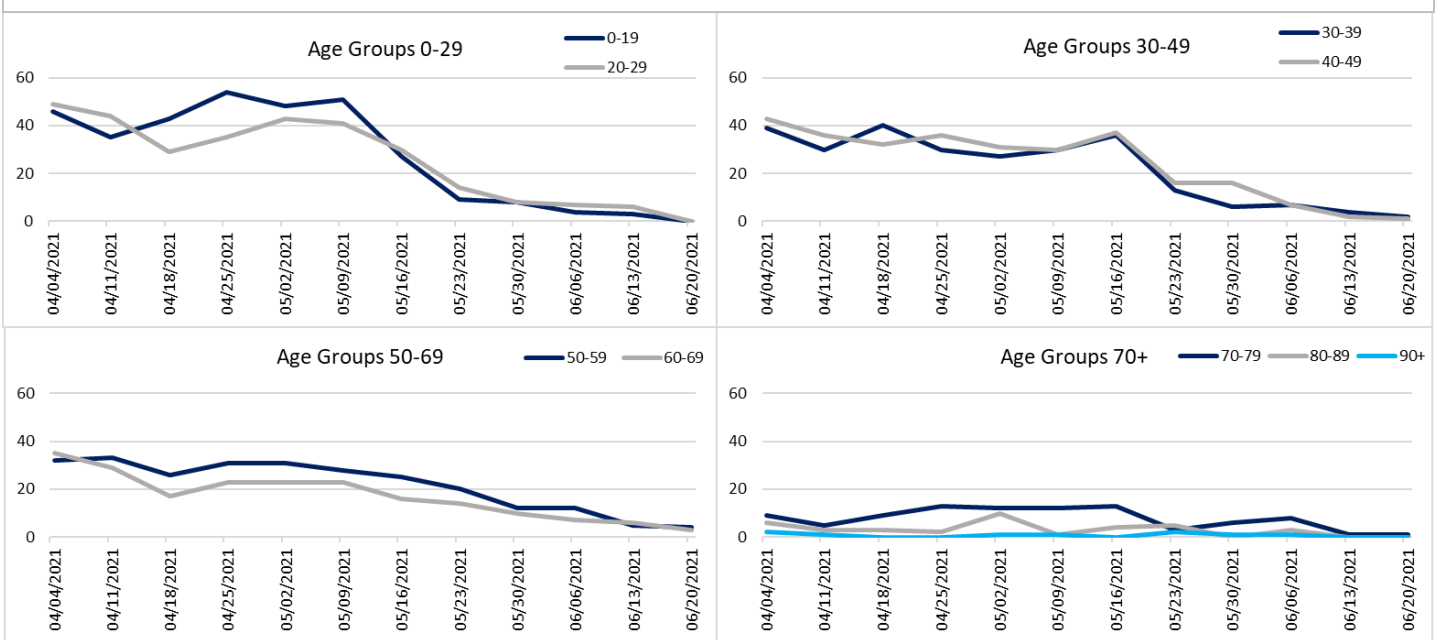
Count of Confirmed Cases by Age Group in Stark County  
Graph 1



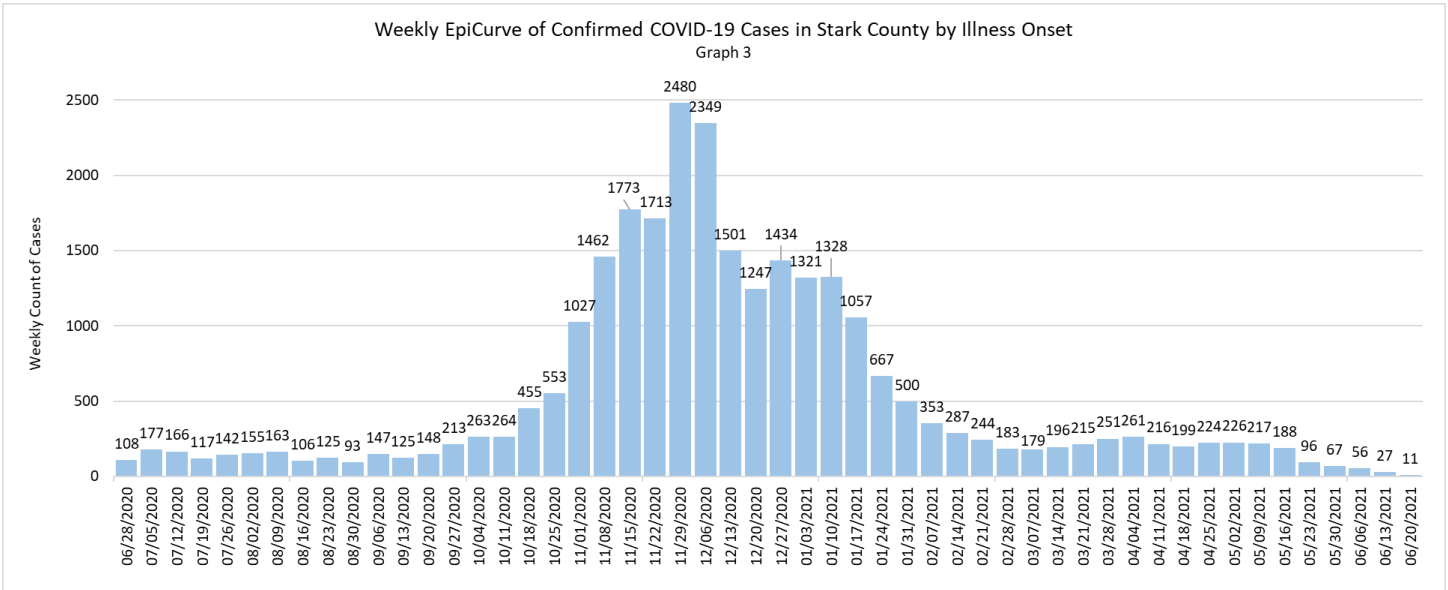
Graph 1 shows the cumulative number of laboratory-confirmed cases by age group by year of diagnosis. There 10 confirmed cases (9 from 2020, 1 from 2021) in which date of birth is currently unknown and not shown in graph above.

Graph 2 shows a breakdown of confirmed cases by week by age groups. As with all data contained in this report, caution is advised when looking at the past 2-3 weeks of data due to delays in testing results. Only 12 weeks of data is shown in graphs below.

Weekly Counts of Confirmed Cases by Illness Onset Date and Age Group  
Graph 2

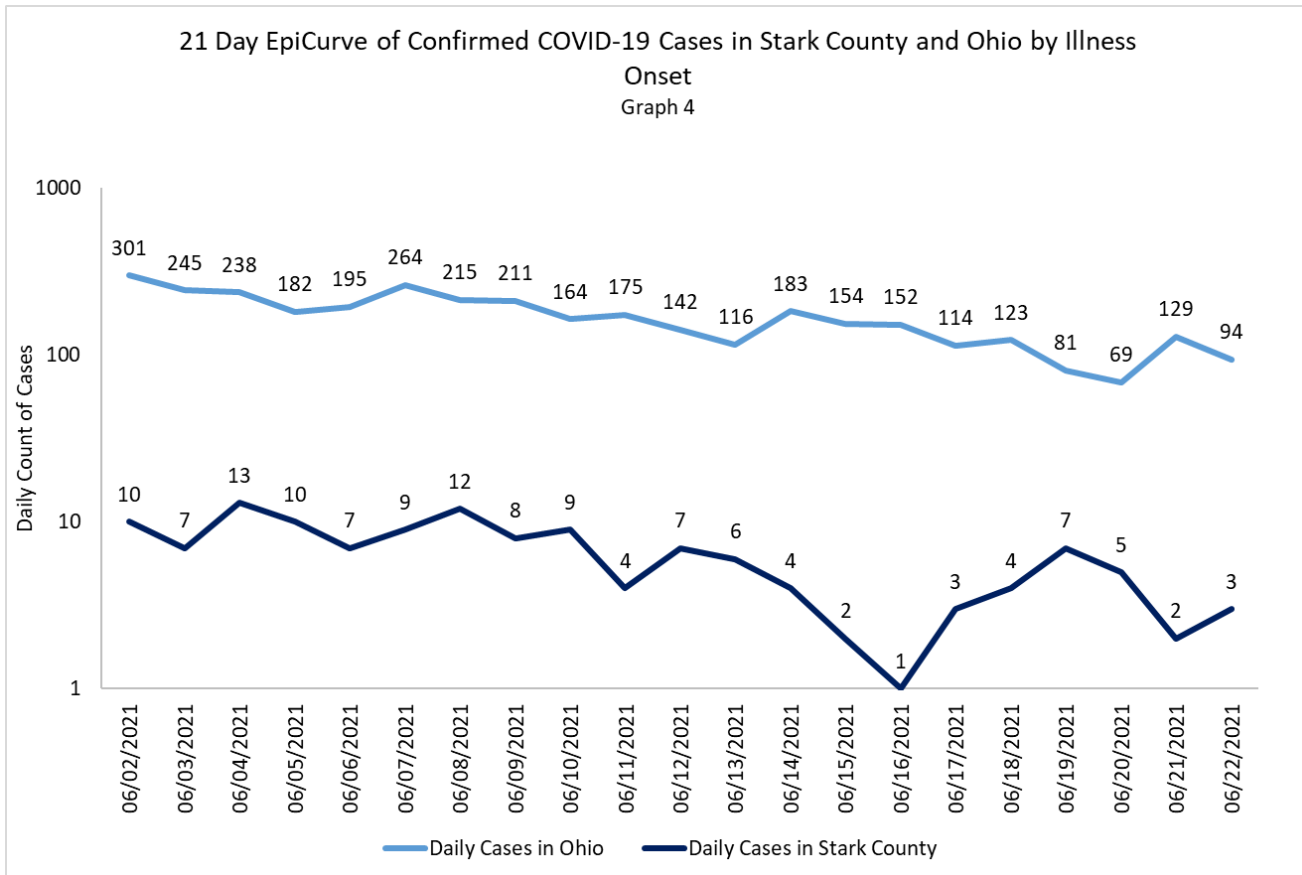


# EPIDEMIOLOGICAL REPORT ON COVID-19



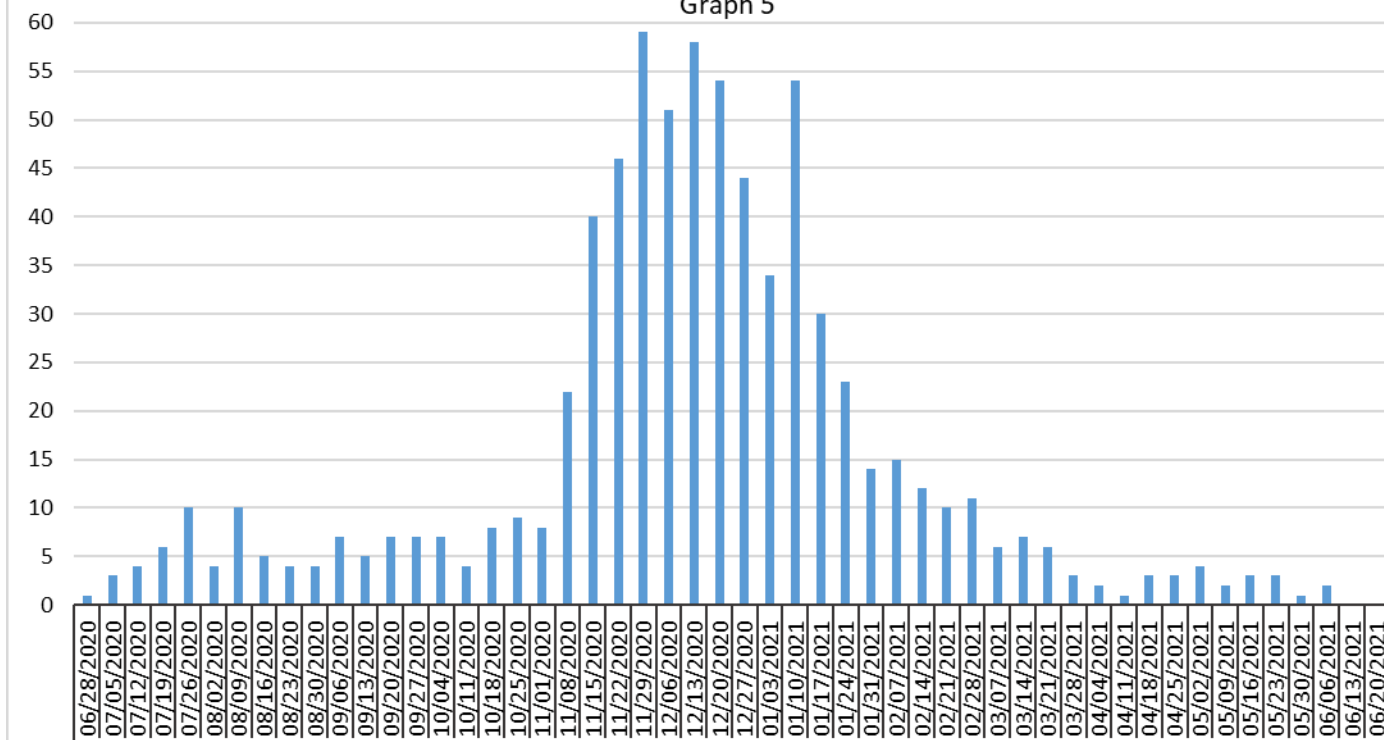
Graph 3 shows the EpiCurve which displays the total number of laboratory-confirmed cases per week, based on the illness onset date for Stark County. If the illness onset date is not available, the earliest known date is utilized, which could be the date the specimen was collected, the date of the test results or the date reported to the local health department. Counts will change as additional information is collected. Stark County’s first confirmed case reported an illness onset date of 2/25/2020 but graph only contains 52 weeks of data. **This data only includes data up until 12:00 pm on 6/24/2021.**

To help highlight short-term daily changes, Graph 4 shows daily counts of laboratory confirmed cases for a 21-day period.



Count of Deaths in Confirmed Cases by Week

Graph 5

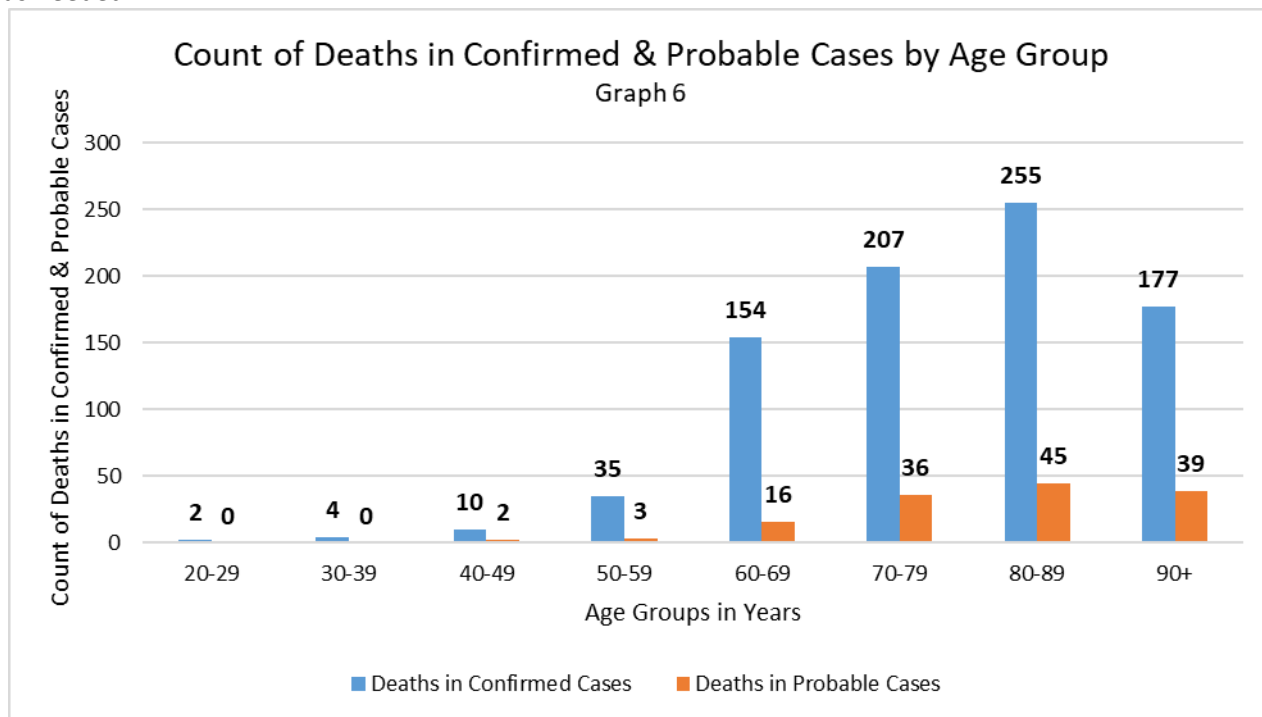


Graph 5 is a breakdown of death counts in laboratory-confirmed cases by week in which the death occurred. Includes only deaths reported to the local health department as of 12:00 pm on 6/24/2021. This isn't an automated process which is why it may be a week or longer for a death to be documented. **Please see last page of report for additional information regarding deaths.**

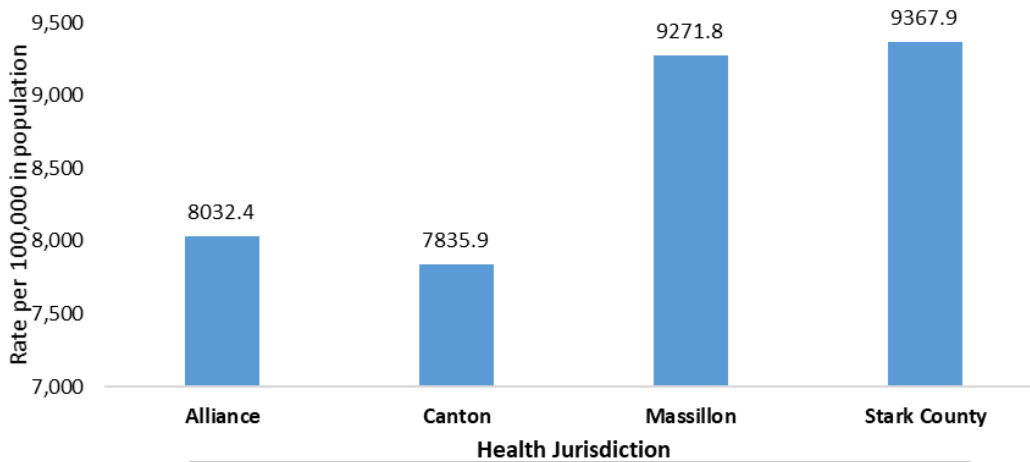
Graph 6 shows the breakdown in deaths in confirmed and probable cases by age group. Additional age groups will be added as needed.

Count of Deaths in Confirmed & Probable Cases by Age Group

Graph 6



Rate of Confirmed and Probable Cases by Health Jurisdiction  
Graph 7

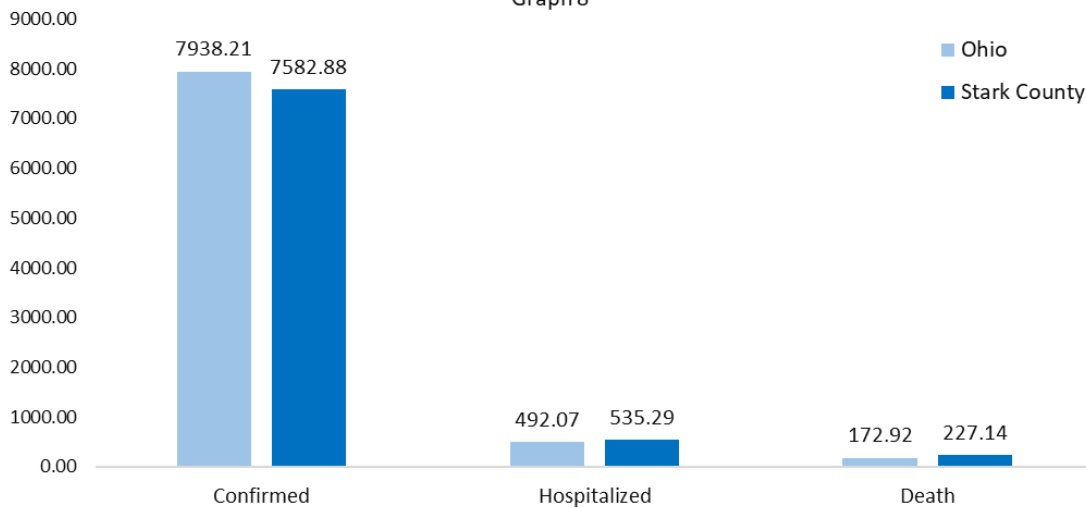


|              | Probable Cases | Confirmed Cases | Total  |
|--------------|----------------|-----------------|--------|
| Alliance     | 225            | 1568            | 1793   |
| Canton       | 879            | 4642            | 5521   |
| Massillon    | 380            | 2625            | 3005   |
| Stark County | 3740           | 19,341          | 23,081 |

Rates=(case count/population)\*100000

Graph 7 shows the rate of cumulative confirmed and probable cases by Stark County jurisdictions. Alliance, Canton and Massillon jurisdictions covers those within those particular city limits. Stark County jurisdiction covers all other areas outside of those three city limits. Rates calculated by 2018 population census data.

Rates of Confirmed Cases by Population  
Graph 8



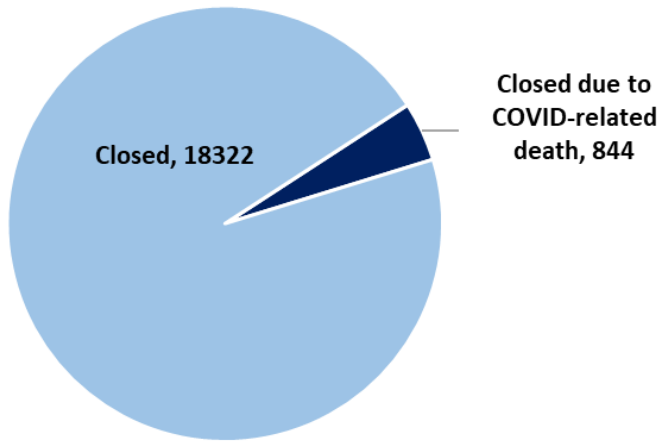
| Counts of Cases | Ohio    | Stark County |
|-----------------|---------|--------------|
| Confirmed       | 927,933 | 28,176       |
| Hospitalized    | 57,520  | 1,989        |
| Deaths          | 20,213  | 844          |

Rates based on 2018 population from data.census.gov.  
Rates=(count/population)\*100000

Graph 8 shows the rates dependent on the 2018 population in Ohio and Stark County. This graph works to compare cases in different populations by normalizing the cases per 100,000 persons.

- Ohio’s rate of laboratory confirmed cases is 1.0x higher than those in Stark County.
- Stark County’s rate of laboratory confirmed cases who require hospitalization is 1.1x higher than Ohio’s rate.
- Stark County’s rate of death due to COVID-19 complications is 1.3x higher than Ohio’s rate.

Closed Confirmed Cases  
Graph 9



Graph 9 is the count of confirmed cases closed or closed due to death. Stark County has a total of 19,166 cases closed of which 844 are due to death.

Cases can be closed for the following reasons:

- The person passed away. Can be either COVID-related or not COVID-related.
- Symptoms have resolved in that case.
- The person is no longer being followed by the local health department.

We have removed the graph associated with health care workers and long-term care facilities. For more information on long-term care facilities including breakdown by facility and by resident/staff, please visit:

<https://coronavirus.ohio.gov/wps/portal/gov/covid-19/dashboards/long-term-care-facilities/cases>  
<https://coronavirus.ohio.gov/wps/portal/gov/covid-19/dashboards/long-term-care-facilities/mortality>

Background from [www.cdc.gov](http://www.cdc.gov): Coronavirus disease 2019 (COVID-19) is a respiratory illness that can spread from person to person. The virus that causes COVID-19 is a novel coronavirus that was first identified during an investigation into an outbreak in Wuhan, China.

Confirmed

- Meets confirmatory laboratory evidence. NOTE: Asymptomatic infections are reportable as confirmed cases.

Probable

- Meets presumptive laboratory evidence AND was reported on or after November 1, 2020; OR
  - o For reports received prior to November 1, 2020: meets presumptive laboratory evidence AND either clinical criteria OR epidemiologic linkage; OR
- Meets clinical criteria AND epidemiologic linkage with no confirmatory laboratory testing performed for SARS-CoV-2; OR
- Meets vital records criteria with no confirmatory laboratory evidence for SARS-CoV-2.

Counts and rates are based on date of illness onset. If onset date is unknown, the earliest known date is utilized. Any rates based on counts less than 10 are considered unreliable and caution should be exercised when interpreting. Due to testing restrictions, data may be skewed. Report compiled by Canton City Public Health.

Data is sourced from: [coronavirus.ohio.gov](http://coronavirus.ohio.gov), ODH data warehouse, and [census.gov](http://census.gov). “These data were provided by the Ohio Department of Health. The Department specifically disclaims responsibility for any analyses, interpretations or conclusions.”

Beginning March 2, 2021, ODH changed from using Ohio Disease Reporting System (ODRS) for mortality data to utilizing Electronic Death Registration System (EDRS) data. This allows only deaths which have been verified by the CDC’s National Center for Health Statistics (NCHS) to be included on the ODH website. This data is not updated daily. For the time being, Stark County will continue to utilize mortality data for ODRS with the disclaimer that data is considered preliminary and subject to change.

For information regarding test priorities, please visit: <https://coronavirus.ohio.gov/static/docs/COVID-19-Testing-Guidance.pdf>

For information regarding testing sites, please visit: <https://coronavirus.ohio.gov/wps/portal/gov/covid-19/testing-ch-centers/>

For information on Restart Stark, including guidance and resources for Stark County, please visit: <https://coronavirus-response-stark-county-resources-starkcountyohio.hub.arcgis.com/>

For information on the Ohio Public Health Advisory System, please visit: <https://coronavirus.ohio.gov/wps/portal/gov/covid-19/public-health-advisory-system/>

For information on testing Statewide, please visit: <https://coronavirus.ohio.gov/wps/portal/gov/covid-19/dashboards/key-metrics/testing>

For information on vaccinations, please visit: <https://coronavirus.ohio.gov/wps/portal/gov/covid-19/covid-19-vaccination-program>